

ProbudsT31
BY LAVA



SOUNDS STYLISH.
FEELS MELODIC.

BASIC OPERATION FUNCTIONS

AUTO POWER-ON/OFF

Power On:

To use the earbuds, open the cover of the charging box and take them out from the charging box, the headset will turn on automatically and enter the TWS pairing state accompanied by a "Power On, Pairing" prompt sound. It then enters ready to pair state with "du" prompt sound.

Power Off:

If pairing is not done in three minutes, the earbuds will be automatically powered off accompanied by a "Power Off" prompt sound. If you put the earbuds into the charging box, the earbuds will be automatically disconnected from the phone and enter the charging state.

CONNECTION

Once the lid of the charging box is opened and earbuds are taken out from the charging box, the LED light of master earbud will flash red & Blue alternately, the LED light of the slave earbud will turn off.

Open Bluetooth function on the phone

Search out "PROBUDS T31" inside phone Bluetooth list, click connection, accompanied by a "Connected" prompt sound. Disconnect the Bluetooth connection, which will be followed by a "disconnected" sound.



AUTOMATIC RE-CONNECTION

After power on, the headset will automatically connect back to the last paired device, if in range with BT turned on.

MANUAL POWER ON

In power off state, long-touch each earbud for 3 seconds to power on, accompanied by a "Power On" prompt sound

MANUAL POWER OFF

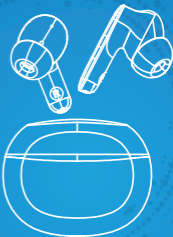
In power on state, the long-touch earbud for 6 seconds to power off, accompanied by "Power Off" prompt sound

ANSWER CALL

You can answer an incoming call by single touch the earbud (L) or earbud (R), accompanied by a "tick" prompt sound.

REJECT CALL

You can Reject a call by long touch the earbud (L) or (R) for 2 seconds and release it, accompanied by a "tick" prompt sound.



HANG UP CALL

During the ongoing call, you can hang up the call by single touch the earbud (L) or (R), accompanied by a “tick” prompt sound.

CANCEL DIALING

When in dialing mode, you can cancel the dialing by single touch the earbud (L) or (R), accompanied by a “tick” prompt sound.

MUSIC PLAY/PAUSE

In music playing mode, single touch the earbud (R) or (L) to pause music, and repeat operation can play music.

PREVIOUS SONG

In music playing mode, double touch earbud (L) to play Previous song.

NEXT SONG

In music playing mode, double touch earbud (R) to play next song.

VOICE ASSISTANT TURN ON/OFF (SIRI/GOOGLE ASSISTANT)

On standby or music mode, when playing music long press 3 seconds the earbud (L/R) to turn on voice assistant. Repeat operation can turn off voice assistant.



PRO-GAME MODE

Three Tap either right or left earbud to turn on Pro Game Mode (low latency mode). Repeat operation can turn off the pro game mode.

LOST WARNING/OUT OF RANGE

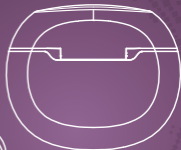
When device is out of BT range or is disconnecting abnormally, there will be a "Disconnected" prompt sound.

RESET

Tap 6 times on Left or Right earbud to reset (clear phone pairing information, clear TWS pairing information). The Earbuds will turn off. Manually turn on or put earbuds in Charging case to enter pairing state again.

LOW BATTERY WARNING

When battery is low, device will alert with "Battery Low" prompt sound at 20% battery level, then at 10% battery level and finally will power off at 0% battery.



LED LIGHT STATUS

Pairing

The red and blue lights flash alternately. After pairing timeout, it will automatically power off after about 3 minutes.

Standby after connected

LED OFF

In calling

LED OFF

Playing music

LED OFF

While Charging

Red LED ON

Full charged

LED OFF



Low voltage warning

Red LED flashes once every 5 seconds, accompanied by a "Low Battery" sound.



ProbudsT31

BY LAVA

www.lavamobiles.com

